

Updates

TaxWise releases updates before tax season and periodically throughout tax season. There are two types of updates for your software: Program and Module.

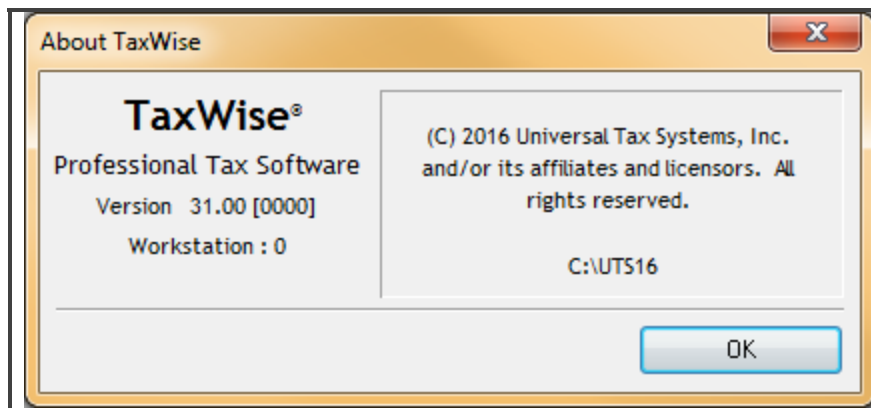
Program updates are for program features. Module updates include:

- Federal packages, forms and calculations
- State forms and calculations
- Bank forms and calculations

Program Updates

To check the program version of TaxWise:

1. On the Help menu, click **About**. TaxWise displays the About TaxWise dialog box:

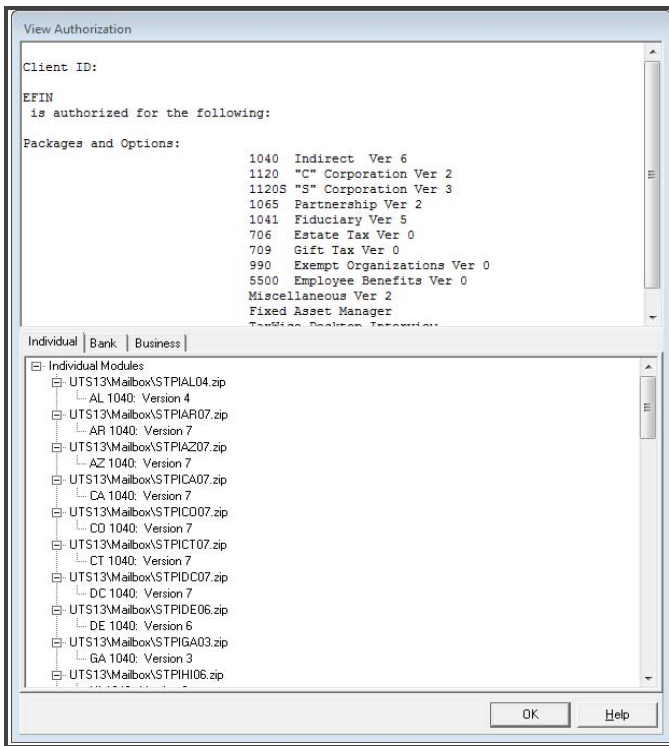


2. Compare this version to the latest update available on the TaxWise Solution Center.

Module Updates

Check for module updates by using View Authorization to see if your program has the latest updates.

1. To view authorizations, go to the Help menu, and click **View Authorization**. TaxWise displays the View Authorization dialog box containing a list of your modules and the version you currently have:

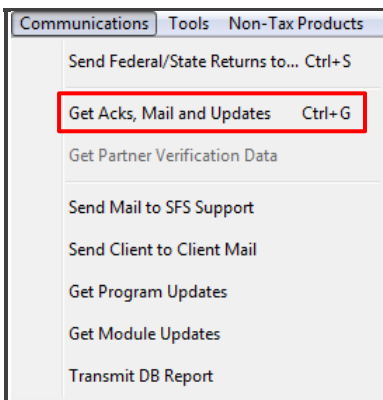


Communication Menu Update Options

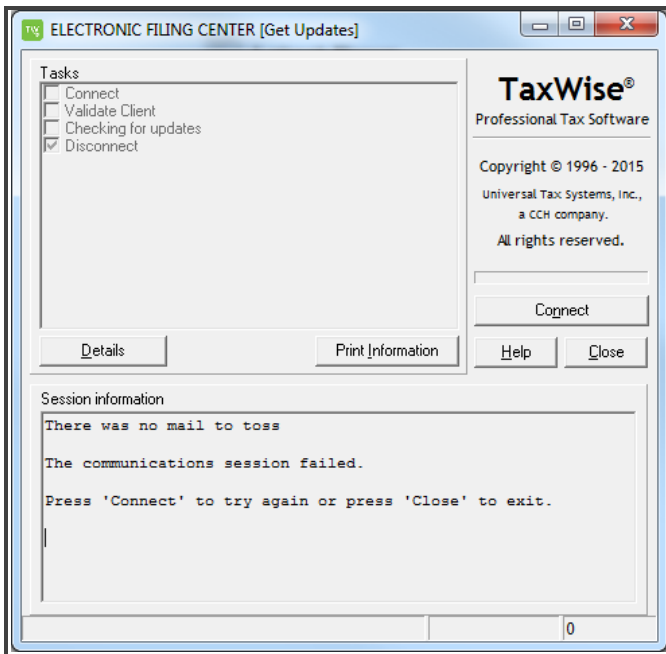
If you do not have the most up-to-date versions, you will need to update your program. When getting updates in TaxWise, you can choose from either program or module updates.

To get updates in TaxWise:

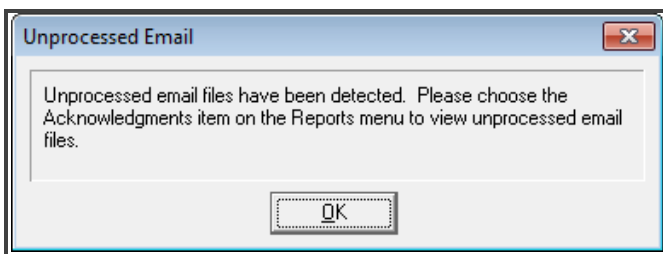
1. On the Communications menu, click **Get Acks, Mail, and Updates**.



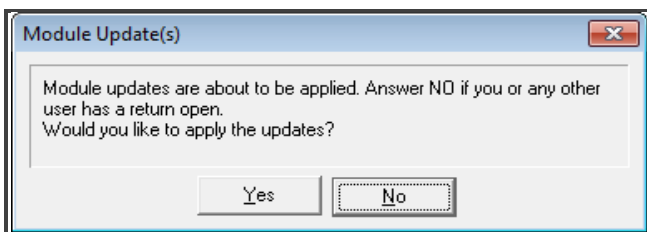
2. TaxWise displays the ELECTRONIC FILING CENTER [Get Updates] dialog box, which connects to the Electronic Filing Center and downloads available updates:



3. Once the communication session has finished, click **Close**.
4. TaxWise displays the **Unprocessed Email** dialog box if it finds unprocessed email files. Follow the instructions on the screen to view these files. Click **OK**.



5. TaxWise displays the Module Update(s) dialog box. Click **Yes** to apply the module updates right away, or click **No** if you or any other user has a return open, and you want to apply the updates later.



6. TaxWise displays the Install Federal/State/Bank Module Update dialog box. TaxWise applies each update individually. If you have several updates to install, TaxWise may take several minutes to apply them. Click **OK**.

